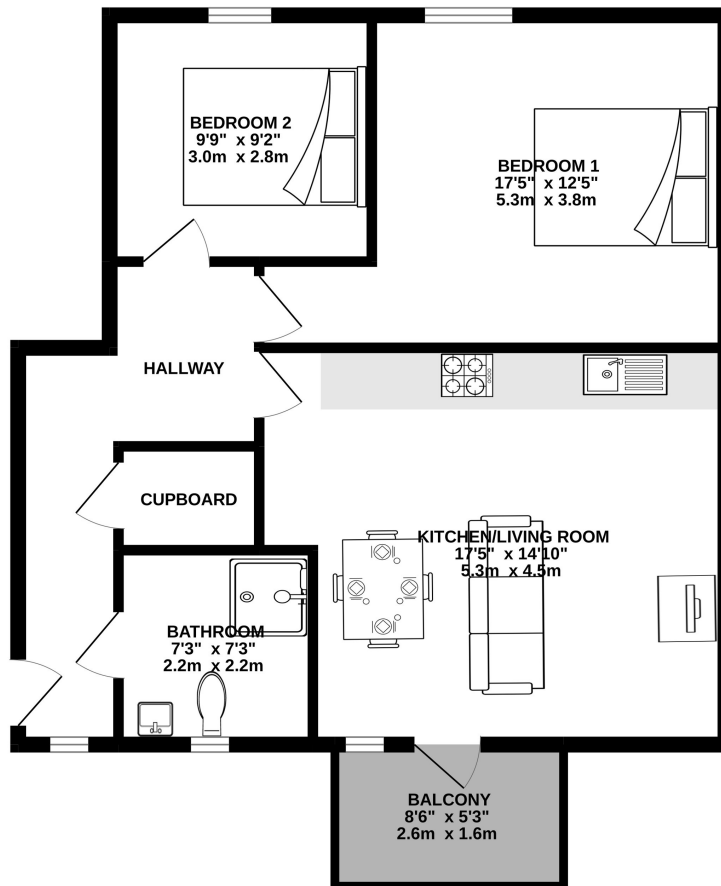


FLOORPLAN

17 Pierre Arrive House

GROUND FLOOR
675 sq.ft. (62.7 sq.m.) approx.



TOTAL FLOOR AREA : 675 sq.ft. (62.7 sq.m.) approx.

Whilst every attempt has been made to ensure the accuracy of the floorplan contained here, measurements of doors, windows, rooms and any other items are approximate and no responsibility is taken for any error, omission or mis-statement. This plan is for illustrative purposes only and should be used as such by any prospective purchaser. The services, systems and appliances shown have not been tested and no guarantee as to their operability or efficiency can be given.

Made with Metropix ©2022

We kindly remind you that this floor has been created for illustration and guidance purposes only, and does not constitute any claim, warranty, representation or term of any contract. The dimensions given in the floor should not be taken as fact and do not form part of any contract. We strongly encourage you to inspect the property in person, where possible, and to seek independent professional advice and surveys (including full structural) prior to purchase.



Hawk Estates, Hawk House,
22 Esplanade, St Helier, Jersey, JE1 1HH



+44 (0)1543 510001



enquiries@hawk.je



www.hawk.je

A fresh approach to Jersey Property